



2025 Rental Projection
29 W Yacht Pond

| Seasons | Season period | Approximate Nightly Rate | Total weeks |
|-----------------------|---------------|--------------------------|-------------|
| Winter | 1/4/25 | \$725 | 0 |
| Early Spring | 2/13/25 | \$725 | 0 |
| Spring Break | 3/8/25 | \$965 | 2-1/2 |
| Peak Spring Break | 3/29/25 | \$1100 | 1 |
| Late Spring | 4/5/25 | \$895 | 3 |
| Summer | 5/24/25 | \$1275 | 5 |
| 4th of July | 6/28/25 | \$1550 | 1 |
| Summer | 7/5/25 | \$1275 | 4 |
| Summer II | 8/2/25 | \$1050 | 1 |
| Summer Low | 8/16/25 | \$895 | 1-1/2 |
| Labor Day | 8/28/25 | \$995 | 1/2 |
| Late Summer | 9/2/25 | \$785 | 2 |
| Fall Break | 10/4//25 | \$925 | 2 |
| Fall | 10/25/25 | \$800 | 0 |
| Thanksgiving | 11/22/25 | \$950 | 1/2 |
| Winter | 11/29/25 | \$725 | 0 |
| Christmas & New Years | 12/25/25 | \$950 | 1 |

Total Weeks: 25
Total Gross Rent \$190,605

OUR CONTACT

Info@30abeachproperties.com | 850-806-1825 | 30abeachproperties.com

*This projection is an estimate, not a guarantee of income, market conditions are subject to change



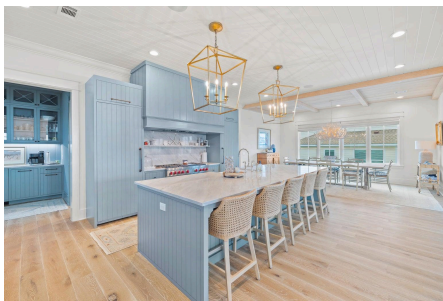
Premium Properties | Attentive Service

30-A Beach Properties provides a superior level of rental management and home maintenance. You are invited to join our exquisite selection of vacation rentals in the most prestigious areas of 30-A.

Since 2010, we have curated a collection of elegant cottages and upscale condos in highly sought-after locations. Our specialized property management services are designed to maximize your revenue while preserving the beauty and integrity of your investment.

With a team of seasoned inspectors, meticulous housekeepers, and attentive rental managers, we ensure that your property receives the utmost care. Elevate your rental experience with us and indulge in unparalleled luxury.

Info@30abeachproperties.com | 850-806-1825 | [30abeachproperties.com](https://www.30abeachproperties.com)



*This projection is an estimate, not a guarantee of income, market conditions are subject to change